

A6204 X 2 WARDROBE 801/600/1833 (31 1/2" x 23 5/8" x 72")
LIN25 X 1 LINEA RECEPTION DESK 2456/824/1105 (96 3/4" x 32 1/2" x 43 1/2")
CAN11 X 1 CANOE LAMP 1105/360/360 (43 1/2" x 14 1/8" x 14 1/8")





WARDROBE

A **WARDROBE** is an essential closet for any office. The **STANDARD** and **PRO** lines include four wardrobe models differing in dimensions and interior arrangement. The finishes and sizes of the wardrobes match the **PRO** and **STANDARD** ranges and make it possible to integrate the wardrobes in every room.



Garment hanger bar



Pull-out hanger

A52P4 X 1 801/3/432/1833 (31 1/2" x 17" x 72 1/8")
A57P3 X 1 602/432/1833 (23 3/4" x 17" x 72 1/8")



A2104HZ X 3 HPL FRONT STORAGE 801/432/777 (31 1/2" x 17" x 30 5/8")
LIN43 X 1 LINEA RECEPTION DESK 2844/850/1105 (112" x 33 1/2" x 43 1/2")
MM-PU X 3 + **MM-ON** X 3 + **MM-PO** X 3 LOUNGE 1950/720/770 (76 6/8" x 28 3/8" x 30 3/8")





GLOSS DOOR STORAGES

GLOSS STORAGE units represent a range of cabinets with high-gloss HPL laminate finish on fronts. There are ten different colours available. They range from low-key grey, graphite to vivid green and pink. The body of the cabinet can be black, aluminium, white or anthracite. Such a colour scheme makes it possible to combine the cabinets with other components of the PRO or STANDARD line. The cabinet doors are fitted with a patent lock and a push-to-open system. Optionally, can be equipped with glass top.

A3104HZ X 2 HPL FRONT STORAGE 801/432/1129 (31 1/2" x 17" x 44 1/2")
A8006T X 2 GLASS TOP 800/432/33 (31 1/2" x 17" x 1 1/4")



A5104HZ X 3 HPL FRONT STORAGE 801/432/1833 (31 1/2" x 17" x 72 1/8")
A5404HZ X 1 HPL FRONT STORAGE 801/432/1833 (31 1/2" x 17" x 72 1/8")





A5504 X 2 STORAGE 800/432/1833 (31 1/2" x 17" x 72 1/8")
A5500 X 2 GLASS DOOR WITH ALUMINIUM FRAME, TRANSPARENT, TEMPORED GLASS 800/20/1754 (31 1/2" x 3/4" x 69")
A5404 X 1 STORAGE 800/432/1833 (31 1/2" x 17" x 72 1/8")
A5300 X 1 GLASS DOOR WITH ALUMINIUM FRAME FROSTED TEMPERED GLASS 800/20/1050 (31 1/2" x 3/4" x 41 3/8")
GAYA X 4 CHAIR 660/510/825 (19 2/8" x 20 2/8" x 32 7/8")

GLASS DOORS complement the range of STANDARD and PRO storages.
 There are two types of glass available: clear and opaque, with an aluminium frame, or with no frame. Glass elements can be fitted in cabinets and bookcases of 400 mm and 800 mm in width as well as 30H and 50H in height, creating display cabinets which make excellent supplementary equipment of offices or exhibition places.

GLASS DOOR STORAGES

AS300 GLASS DOOR WITH ALUMINIUM FRAME FROSTED TEMPERED GLASS
800/20/1050 (31 1/2" x 3/4" x 41 3/8")



IM300 GLASS DOOR WITH ALUMINIUM FRAME, TRANSPARENT TEMPERED GLASS
800/20/1050 (31 1/2" x 3/4" x 41 3/8")



A3504 X 3 STORAGE 801/432/1129 (31 1/2" x 17" x 44 1/2")
AS31 X 4 GLASS DOOR 397/5/1050 (15 5/8" x 1/4" x 41 3/8")



A12M X 1 MANAGERIAL STORAGE 1600/434/600 (63" x 17 1/8" x 23 5/8")

SPECIAL STORAGES are a group of multi-purpose storages which can be used in any situation: for ad hoc meetings, or individual work. A characteristic feature of these storages is that they can be adapted to various work styles and individual needs of the user. They can be combined with PRO or STANDARD storage units.



A14M X 1 MANAGERIAL STORAGE 1400/432/600 (55 1/8" x 17" x 23 5/8")

A120M X 1 MANAGERIAL STORAGE 1200/432/599 (47 1/4" x 17" x 23 5/8")



S85 X 1 PRINTER STORAGE 710/600/600 (28" x 23 5/8" x 23 5/8")



In energetic teams, there may be a need for a quick rearrangement of the office, and the A3R02 mobile storage unit makes it possible to modify the work space within minutes. It is an ideal solution for meeting rooms and an ergonomic tool for delivering multimedia presentations.

A3R02 X 1 MOBILE STORAGE MULTIFUNCTION 550/550/1188 (21 5/8" x 21 5/8" x 46 3/4")
BUN24L X 1 MEETING TABLE YAN_C 1400/1300/740 (55 1/8" x 51 1/8" x 29 1/8")
BUN24S X 1 MEETING TABLE YAN_C 1400/1300/740 (55 1/8" x 51 1/8" x 29 1/8")
BUN24P X 1 MEETING TABLE YAN_C 1400/1300/740 (55 1/8" x 51 1/8" x 29 1/8")
GAYA X 4 CHAIR 660/510/825 (19 2/8" x 20 2/8" x 32 7/8")

SPECIAL STORAGES





LOK08 X 7 LOCKER TYPE STORAGE 801/432/1619 (31 1/2" x 17" x 63 3/4")



Code lock



Standard digital combination lock

LOCKER STORAGES

LOCKERS are an answer to a growing need for optimising the office space.

Such units often replace pedestals in large offices. The locker is mainly designed for storing personal artefacts. Lockers can be assigned to specific individuals, and correspondence slots are an additional advantage. Apart from the traditional lock, the locker can be fitted with a combination lock or an electronic one. Lockers are available as 40H and 50H modules, 800 mm in width.

LOK10 X 11 LOCKER TYPE STORAGE 801/432/2010 (31 1/2" x 17" x 79 1/8")
CAN11 X1 CANOE LAMP 1105/360/360 (43 1/2" x 14 1/8" x 14 1/8")
MM-PM X 4 LOUNGE 450/450/420 (17 3/4" x 17 3/4" x 16 1/2")



KCD80L X 4 CARGO 402/800/1129 (15 7/8" x 31 1/2" x 44 1/2")
KCD80P X 4 CARGO 402/800/1129 (15 7/8" x 31 1/2" x 44 1/2")
KCD80SL X 2 CARGO 402/800/1129 (15 7/8" x 31 1/2" x 44 1/2")
IKDT13 X 4 PEDESTAL 402/600/586 (15 7/8" x 23 5/8" x 23 1/8")
IA3P08 X 2 SLIDING DOOR 1600/432/1129 (63" x 17" x 44 1/2")
HPR2 X 2 HANDLES
IA5506 X 3 STORAGE 1200/432/1833 (47 1/4" x 17" x 72 1/8")
IA2505 X 3 STORAGE 1000/432/740 (39 3/8" x 17" x 30 5/8")
BLN14L X 4 ELEMENT FOR DESK PAIRING 1400/1600/740 (55 1/8" x 63" x 29 1/8")
PL180 X 1 EXTENTION 1600/60/2 (63" x 23 5/8" x 1 1/8")
BZB14 X 1 DOUBLE DESK TOP 1400/1600/83 (55 1/8" x 63" x 3 1/4")
ZUT34 X 5 TWIN FABRIC PANEL FOR BENCH 1390/30/360 (54 3/4" x 1 1/8" x 14 1/8")
SNL16 X 4 SUNBEAM LAMP Ø 1440/410 (Ø 56 3/4" x 16 1/8")
SAVA X 9 CHAIR 660/610/1050-1150 (26" x 24" x 38 5/8" - 42 4/8")

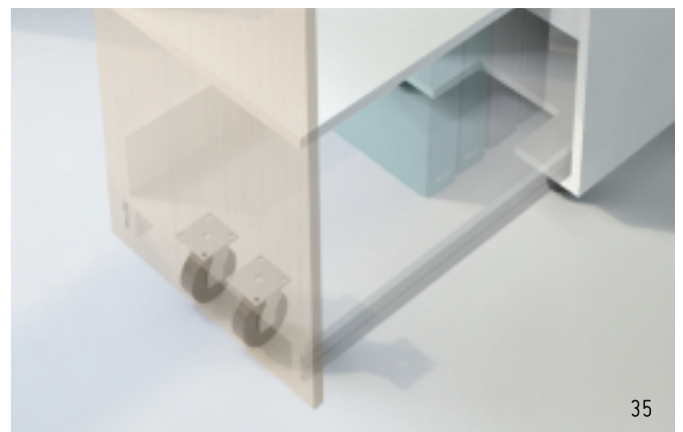
CARGO

STORAGES

Apart from serving as a pedestal, **CARGO** storage can also work as a desk pedestal or a side panel. Thanks to various configuration options, it can be combined in systems, eliminating desk legs. **CARGO** enables clear organization of office space and it gives it a clear structure.



The top shelf includes pencil tray. The internal structure of a **CARGO** unit divides the space into two equal parts. The spaces between the shelves allow storage of file binders in rows. The base is equipped with rollers which facilitate opening (pulling out) of the internal part of the unit.

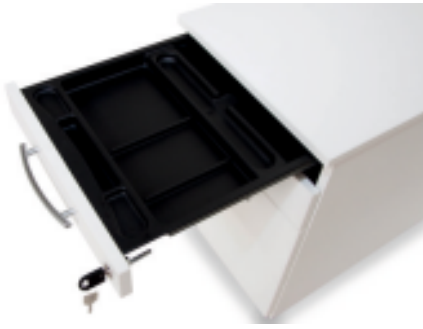




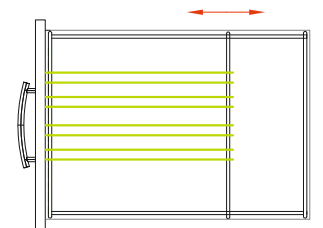
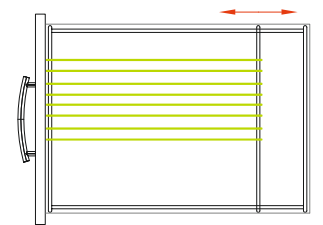
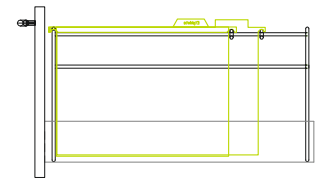
STANDARD PRO AND GLOSS PEDESTALS

A pedestal is a necessary component of any work station. In the **PRO** and **STANDARD** lines, there are groups of fixed pedestals aligned in height with the desk, and mobile pedestals which can additionally be fitted with a cushion, doubling up as a seat. The colour scheme of pedestals perfectly matches **PRO** and **STANDARD** ranges.





KRT – metal drawers
separate pencil drawer



KDT – metal drawer
pencil tray



- To reinforce the structure, an additional roller in the pedestal is designed for versions with a bottom drawer with a file hanger
- KRT pedestals have a separate pencil drawer, and KDT pedestals have a plastic pencil tray in the top drawer
- All pedestals are by default fitted with metal drawers with a central lock and a foldable key, Anti-tilt mechanism and a silent closing system
- Suspension file drawer can be adjusted in width to fit any folder size; 100% extraction
- Castors with breaks
- STANDARD line includes pedestals with an extended top playing a role of a link and expanding the work surface



STANDARD PRO AND GLOSS PEDESTALS

Pedestals come in two basic versions: mobile pedestals of 586 mm height and fixed pedestals of 740 mm in height. Mobile pedestals are available with either 4 or 5 castors. Fixed pedestals have four level adjusters. Pedestals come in two depths: 600 and 800 mm.



KDT74 X 2 PEDESTAL 402/800/740 (15 7/8" x 31 1/2" x 29 1/8")
BA60218 X 1 OGL_A BENCH 1600/1610/740 (63" x 63 3/8" x 29 1/8")
ZUT16 X 1 TWIN PANEL 1590/30/350 (62 5/8" x 1 1/8" x 13 3/4")

KDT13 X 1 PEDESTAL 402/600/586 (15 7/8" x 23 5/8" x 23 1/8")
SKP13 X 1 PEDESTAL CUSHION 400/600/52 (15 3/4" x 23 5/8" x 2")
BA6048 X 1 OGL_A DESK 1600/800/740 (63" x 31 1/2" x 29 1/8")



SLD13HT PEDESTAL 416/600/587 (16 3/8" x 23 5/8" x 23 1/8")
SLD12HT PEDESTAL 416/600/587 (16 3/8" x 23 5/8" x 23 1/8")



STANDARD pedestals come in two depths: 600 and 800 mm

SLD130 PEDESTAL 416/800/586 (16 3/8" x 31 1/2" x 23 1/8")



SLD - metal drawer

STANDARD AND GLOSS PEDESTALS



SLD – metal drawer
plastic pencil tray



STANDARD and **GLOSS** handle-free pedestals are available in the mobile version in black, aluminium, white and anthracite finish. The front and top of **GLOSS** pedestals is covered with high-gloss HPL.



KD1064 X 2 PEDESTAL 1000/600/740 (39 3/8" x 23 5/8" x 29 1/8")
KD1263 X 2 PEDESTAL 1200/600/740 (47 1/4" x 23 5/8" x 29 1/8")
KRT130 X 1 PEDESTAL 402/800/586 (15 7/8" x 31 1/2" x 23 1/8")
KRT13 X 1 PEDESTAL 402/600/586 (15 7/8" x 23 5/8" x 23 1/8")
IA3104 X 1 STORAGE 801/432/1129 (31 1/2" x 17" x 44 1/2")
IA3404 X 1 STORAGE 801/432/1129 (31 1/2" x 17" x 44 1/2")
IA3504 X 1 STORAGE 801/432/1129 (31 1/2" x 17" x 44 1/2")
A3R02 X 1 MOBILE STORAGE MULTIFUNCTION 550/550/1188 (21 5/8" x 21 5/8" x 46 3/4")
BOQ05 X 4 OG_Q DESK 1800/800/740 (70 7/8" x 31 1/2" x 29 1/8")
CAN11 X 1 CANOE LAMP 1105/360/36 (43 1/2" x 14 1/8" x 14 1/8")
SAVA X 2 CHAIR 660/610/1050-1150 (26" x 24" x 38 5/8" - 42 4/8")



STANDARD PEDESTALS

PEDESTALS offer a multi-purpose solution—always handy.
A suitable model from the **STANDARD** range can be
selected to meet expectations.





A1104 X 2 STACK - ON TAMBOUR STORAGE FOR PEDESTAL 800/402/389 (31 1/2" x 15 7/8" x 15 3/8")
PA11 X 2 FABRIC SCREEN FOR STORAGE 461/341/77 (30" x 13 3/8" x 7/8")
IKRT73 X 2 PEDESTALS 402/800/740 (15 7/8" x 31 1/2" x 29 1/8")

Pedestals for various applications offer numerous arrangement options and are useful in daily work, if a cushion is fitted on the top, an extra seat is created.



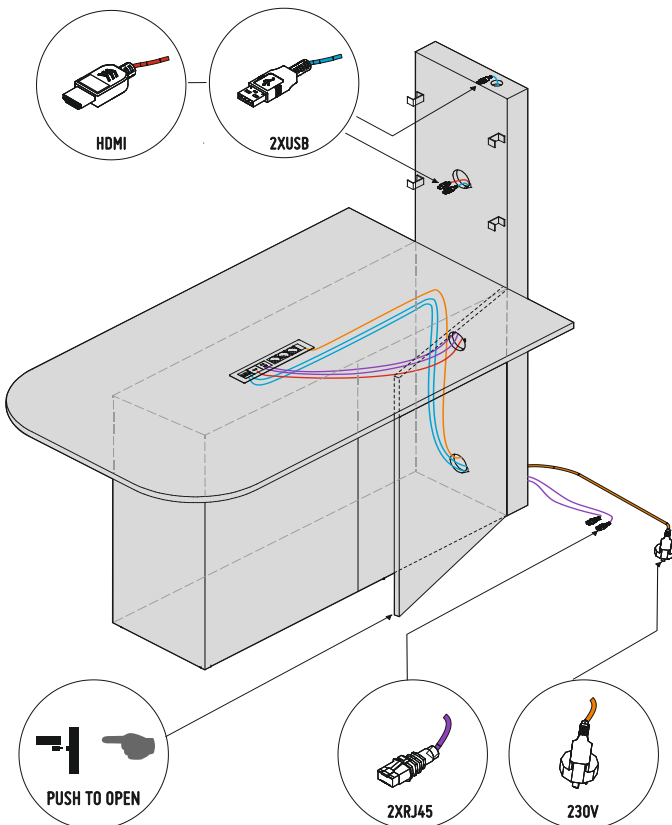
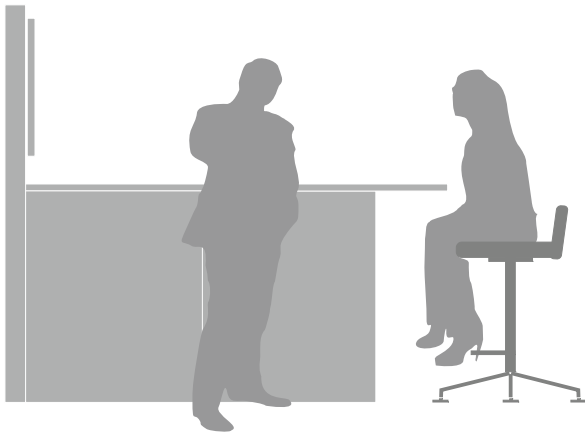
IKRT13 X 2 PEDESTAL 402/600/586 (15 7/8" x 23 5/8" x 23 1/8")
IA3404 X 2 STORAGE 801/432/1129 (31 1/2" x 17" x 44 1/2")
IA4404 X 2 STORAGE 801/432/1481 (31 1/2" x 17" x 58 1/4")
IA4504 X 1 STORAGE 801/432/1481 (31 1/2" x 17" x 58 1/4")
ZBN18 X 3 YAN_Z BENCH 1800/1600/740 (70 7/8" x 63" x 29 1/8")
ZUS18 X 3 SONIC PANEL 1790/38/350 (70 1/2" x 1 1/2" x 13 3/4")
SAVA X 2 CHAIR 660/610/1050-1150 (26" x 24" x 38 5/8" - 42 4/8")
SNL16 X 2 SUNBEAM LAMP Ø 1440/410 (Ø 56 3/4" x 16 1/8")

PRO PEDESTALS





A **MULTIMEDIA STAND** makes it possible to hold meetings involving multimedia presentations. The base of the table has a space with a door fitted with a push-to-open system. This place may serve as a storage unit to hold various objects.



MS01 X 2 MULTIMEDIA STAND 1100/1950/2000 (43 1/4" x 76 3/4" x 78 3/4")
CAN11 X 2 CANOE LAMP 1105/360/360 (43 1/2" x 14 1/8" x 14 1/8")